



## NIE Gateway™ for System Integrators

Reduce risk and maintain margins on government data sharing engagements while ensuring standards conformance

Sypherlink has helped leading systems integrators realize the following benefits:

- Reduced risk inherent to federal, state and regional data sharing engagements
- Simplified NIEM compliance
- Improved ability to scope project effort, time and cost, enabling more fixed bids and increased margins
- Faster implementations through the automation of time-consuming and costly processes, such as data discovery and mapping
- Seamless integration into preferred data management tools, in which you already have expertise, through pre-built adapters

The Challenge: Integrate a highly complex environment while reducing risk and ensuring margins

Government data sharing projects can be valuable opportunities for system integrators (SIs). However, competition is fierce and reducing risk is vital to keeping costs down and margins high. Risk lies in the complex process of building interfaces to multiple agencies and source systems with poor documentation, scarce domain expertise and mostly manual processes, while overcoming data ownership battles.

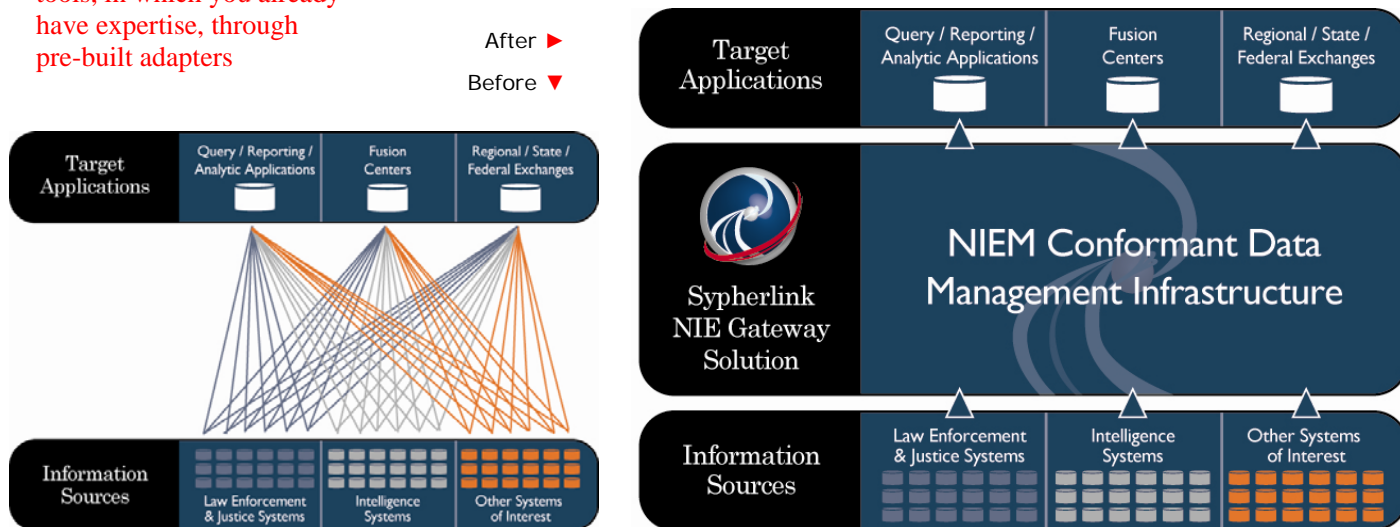
Furthermore, training and ongoing maintenance is required to support national standards, such as the National Information Exchange Model (NIEM).

The Solution: Utilize the only complete and proven NIEM conformant data management infrastructure

Sypherlink's National Information Exchange (NIE) Gateway™ provides immediate standards conformance and accelerates the implementation of data sharing programs, enabling partners to:

**Reduce project risk** – Cut out costly one-off development efforts with the NIE Gateway's library of pre-built adapters while leveraging expertise in your chosen data management tools.

After ▶  
Before ▼



---

*“In any large data conversion effort, accurately and rapidly mapping legacy sources to target systems is always a challenge. With Sypherlink Harvester, we were able to gain data discovery, data organization and mapping capabilities through the use of this technology that ultimately allowed us to perform the initial data mapping more rapidly and accurately than our traditional means. Specifically, we were able to deliver - on average - a single source, fully mapped, in one to two days. This was significantly faster than our traditional means, which took five to seven days.”*

**– Kelby Kostival, President, Results OnShore Consulting**

---

Furthermore, overcome data privacy concerns with NIE Gateway’s virtualization capabilities.

**Turn NIEM compliance over to the experts** – Gain immediate and ongoing compliance without in-house training or expertise.

**Speed current implementations** – Leverage automated discovery and mapping technology and pre-built adapters, and jump start the ETL process to integrate data at a faster rate.

**Increase profits** – Predict mapping costs more accurately with Sypherlink’s patented data mapping technology to meet fixed bids or increase margins.

The NIE Gateway includes these key capabilities:

**Integration Adapters to accelerate data conversions** – Sypherlink developed and maintains a library of pre-built interfaces to leading source records, case and law enforcement management systems and target analytic applications. These interfaces jump start the acquisition of agency data without investing in custom development for each unique system.

**Automated Discovery and Mapping Technology to better scope projects and replace costly, manual processes** – The NIE Gateway speeds access to critical data by utilizing a form of artificial intelligence and probability-based matching algorithms to automate much of the traditionally manual and time-consuming mapping process. It also aids in ETL design and seamlessly feeds common data management tools allowing integrators to leverage expertise in those systems.

**NIEM Reference Hub to facilitate federal standards compliance** – The NIEM Reference Hub contains a fully-relational data model which conforms to the NIEM framework set forth by the U.S. Departments of Homeland Security and Justice enabling quick and easy NIEM conformance.

**Interfaces to Rich Information Sources to provide a more complete picture** – The NIE Gateway offers pre-built interfaces to rich information sources such as Dun & Bradstreet’s commercial database and Acxiom’s Risk Mitigation records providing intelligence analysts and officials a more complete picture.

**Production Data Integration Components to accelerate data sharing initiatives** – Designed to easily and cost-effectively accelerate government data sharing initiatives, this set of components includes a lightweight ETL tool to move data from one relational database to another; XML adapters to construct and send XML messages to target applications, including the highly complex NIEM XML message utilized in government data sharing efforts country-wide; and a production ready data federation platform to access disparate data sources virtually, securely and non-invasively allowing agencies to protect sensitive data.

The NIE Gateway provides all of the critical components necessary to jump-start data sharing programs, enrich analyst views, and increase participation in data sharing initiatives. **For more information, visit [www.sypherlink.com/gateway](http://www.sypherlink.com/gateway)**